

# 10

## things TO KNOW BEFORE YOU GO:



### 1 CHECK-IN AND CHECK-OUT TIMES

Check-in time begins at 4:00pm. However, come as early as when America's Largest Indoor Waterpark opens at 10:00am to pre-register and begin using the Waterpark right away. Don't worry, we'll text you when your room is ready after 4:00pm. Hint – pack a separate waterpark specific bag to make changing a breeze. Don't forget, there are waterpark locker rentals available for your other personal items you may want to keep near. Check-out is no later than 11:00am. After you have checked out, if you have the time, we invite you to stay with us throughout the day and enjoy the waterpark till it closes and many other great Kalahari amenities available.



### 2 IS WATERPARK ADMISSION INCLUDED WITH OVERNIGHT STAYS?

Yes, admission to America's Largest Indoor Waterpark is included for each registered hotel guest! Make sure you get administrator approval for your students to use the Waterpark.

### 3 WHAT PAYMENT TYPES ARE ACCEPTED AT KALAHARI RESORTS?

At the time of check-in, the credit card used to make your reservation must be present with the credit card holder and photo ID. You may also use a Visa, Mastercard, Discover, American Express, and Kalahari Gift Cards as forms of payment for your remaining balance. We do not accept virtual cards or installment loan payment providers. Please note our resort is **100% cashless** and will no longer accept cash payments. You will still be able to tip in cash if you choose to!



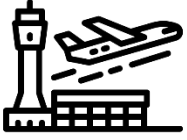
### 4 ROOM AMENITIES

All rooms include a microwave, refrigerator, iron, ironing board, in-room safe, complimentary Wi-Fi, remote control television with cable, alarm clock, voice mail system, hair dryer, luxurious bath amenities and admission to the waterparks.

### 5 DINING OPTIONS ON PROPERTY

Double Cut Steakhouse, Sortino's Italian Kitchen, Cinco Ninos (modern Mexican), Redd's Piano Bar and Lounge, B-Lux Grill and Bar, Baobab Social, The Last Bite (desert and ice-cream shop), Room service – Pizzeria Sortino.





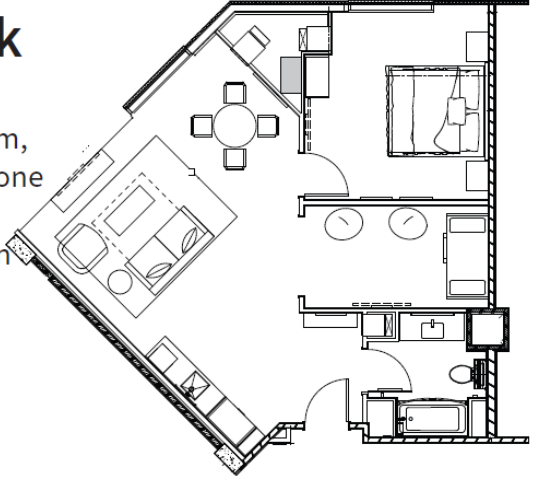
## 6 AIRPORTS

If you're coming from afar and need to fly, then **Austin–Bergstrom International Airport (AUS)** is your destination. The Kalahari Resorts is in Round Rock Texas which is roughly 35 minutes north of the airport. There will be no shuttles to the Kalahari we suggest ridesharing or catching an Uber/Lyft.

## 7 ROOM LAYOUT

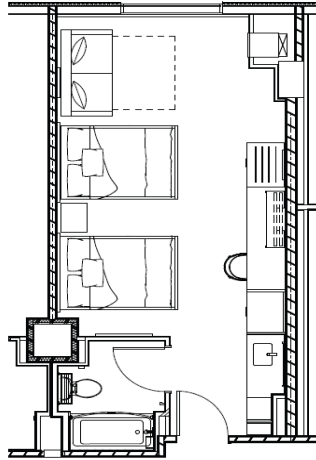
### King Bunk Suite

King size bedroom, Bunk room with one set of twin-sized bunk beds, queen sleeper sofa and a full bathroom



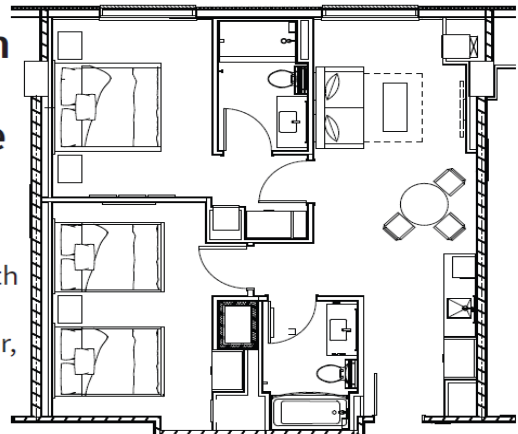
### Double Queen Sofa

This room features two queen beds with a queen size sofa sleeper.



### 2 Bedroom 2 Bathroom Living Room Suite

This suite features one king bedroom, separate room with two queen beds, queen sofa sleeper, living room, three televisions and two full baths.



## 8 ROOM RATES

**King Bunk Suite** \$184 + tax per night, fits up to 6 people. When adding additional guests to any room style beyond which is established for that style's base pricing there will be a charge of \$50.00 per person per night in addition to the base price.

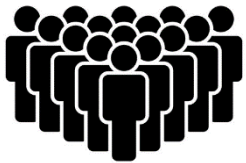
**Double Queen Sofa** \$184 + tax, per night, fits up to 6 people. When adding additional guests to any room style beyond which is established for that style's base pricing there will be a charge of \$50.00 per person per night in addition to the base price.

**2 Bedroom Living Room Suite** \$368 + tax per night, fits up to 8 people. When adding additional guests to any room style beyond which is established for that style's base pricing there will be a charge of \$50.00 per person per night in addition to the base price.

\*RESORT FEE Waived for this event in addition to the rates listed above there is a mandatory taxable resort fee of \$39.99 per room per night. The resort fee goes to cover costs associated with providing the highest level of amenities for our guests. Up to four wristbands into the water park are included in each room.

\*Deposit policy for individual reservations: One night (plus tax) at the time the reservation is made.

cancellation policy for individual reservations: 72 hours, or more, prior to arrival to receive full refund less \$30.00 processing fee. Less than 72 hours prior to scheduled arrival forfeits entire deposit.



## 9 GROUP RESERVATIONS

LOA and TAX EXEMPT: "Due to high volume inquiries, please pass this important information along to your attendees and or include it on your registration forms when promoting your event. Per our policy at Kalahari Resorts, we do not accept completed Letters of Authorization forms,

Tax Exemption forms, nor Purchase Orders to be submitted to us at the **hotel check-in**. We have a dedicated team that approves these forms to ensure validity prior to attachment to the reservations prior to check-in. These forms should be submitted no later than 7 days in advanced to us at [dellscallcenterfax@kalahariresorts.com](mailto:dellscallcenterfax@kalahariresorts.com) or fax them to 608-254-6116. We highly suggest that the attendees submit these forms at minimum two weeks in advanced prior to the hotel check in so our team can process them in a timely manner. Failure to follow this procedure may result in full room and tax charges to the attendees on their personal cards, since our Front Desk will not accept these forms at check-in. If you have any questions at all, I am attaching a link to our website that will bring you to our general policy page. for the entire resort, that explains our policies in full detail. <https://www.kalahariresorts.com/texas/more-info/faq/>

### Group Instructions on checks:

Guests are required to mail the district/school/company check at minimum two (2) weeks prior to arrival (personal checks are not accepted). They are to be sent to Kalahari Round Rock (3001 Kalahari Blvd Round Rock, TX 78665), Attn: Maribeth Galarpe - Finance with reservation confirmation numbers, first/last name, and payment instructions. We welcome prepayment with Purchase Orders as well.

**To avoid confusion and frustration please make sure to read all information.** Do not make reservations until you know for sure how many rooms are needed. The codes will only work if your conference has been completed.

**Booking Website:**

<https://book.passkey.com/e/50467198>

Area 1 – code: HOSATA-A1

Area 2 – code: HOSATA-A2

Area 3 – code: HOSATA-A3

Area 4 – code: HOSATA-A4

Area 5 – code: HOSATA-A5

Area 6 – code: HOSATA-A6

Area 7 – code: HOSATA-A7